

David Gilbert

DRIFFOLD GALLERY

Traditional Paintings

by

Favourite & Important

Artists

In lovely untouched/unspoiled
condition



WILLIAM HENRY MANDER
'A Quiet Stretch on the Severn'
Oil on canvas 22x34"

£3750

British; exhibiting 1880-1922.

Widely popular Midlands landscape artist, usually of fast running river landscapes in the Snowdonia areas. This lovely, peaceful scene on the River Severn is less common and probably pre-dates his continuing visits to North Wales. The Royal Birmingham Society of Artists exhibited over 60 of his paintings - and the Royal Hibernian Academy in Dublin - more than a dozen. This picture is direct from a deceased estate.



ANDREUS SCHELFHOUT
'A Sunny Day on a Dutch River'
Oil on panel 7x9"
£3950

Dutch 1787-1870.

An idyllic Summer landscape by the great Dutch master of landscape in the romantic tradition. Direct from a private collection and remaining in pristine condition ex McConnell Mason Gallery, London, some decades ago. Paintings in many museum collections, including the National Gallery and the Rijkmuseum. Amsterdam. Large important works by the artist fetch seriously big money.



EUGENE JOSEPH VERBOECKHOVEN

'Cattle, Chickens & Rabbit in Barn,

Sunlight flooding in'

Oil on panel 24x30"

£16500

Belgian; 1798-1881.

Major European master of farm animal subjects. This important size work is direct from a Midlands private collection and remains in fine original condition. Paintings in the Victoria and Albert Museum, The Wallace Collection and Metropolitan Museum of art New York.



CLAUDE CARDON

'A Farmyard Encounter'

Oil on canvas 20x30"

£3750

British; exhibiting 1892-1920.

Popular painter of farm animal subjects, actually the son of Samuel James Clark and the most successful of that Clark family of painters. The Royal Academy exhibited his work from 1892 to 1915 and also the Royal Society of British Artists. This fine typical oil is direct from private owners and remains in top condition.



FREDERICK E VALTER

'Cows and Sheep in Upland Landscape'

Oil 19x24"

£1650

British exhibiting 1878-1900.

Mint untouched.



WALTER E. ELLIS
‘Near Beddgelert’
Oil on canvas 20x30”
£650



JOHN FREDERICK HERRING Junr

'A Busy Farmyard'

Oil on canvas 15x24"

£4950

British 1815-1907.

The most prolific of the Herring family of equine painters, son of John Frederick Herring Senior, who was of the first rank.

Highly popular for his own, more stylized, portrayals of farming and sporting life - and widely reproduced on popular print editions, engravings and calendars to this day.



GEORGE CLARE

'Baskets of Fruit on a Mossy Bank,
Oil on canvas 18x24"

£2600

British 1835-1890s.

Father of the highly productive Clare family.



THOMAS BAKER of LEAMINGTON

'Offchurch, Warwickshire'

Oil on panel 10x14"

£2650

British 1809-1869.

Best of the Baker family of artists and universally known as Thomas Baker of Leamington. Exhibited at the Royal Academy and other leading societies, typically depicting cattle in finely detailed landscapes. Leamington Art Gallery hold a big collection of his oils and some watercolours. Birmingham Museum and Art Gallery hold his notes and list of numbered works. This classic example remains in pristine condition in a lovely early swept frame and is numbered 469.



LUDWIG HERMAN

'A Busy Continental River Port'

Oil on canvas 10x14'

£2250

Also a Pair 12x17" £4450

German, 1812-1881. Landscape and riverscape artist. studying at The Prussian Academy of Art and under Isabey in Paris. Much influenced by H.B.Koekkoek and he could be described as 'The Canaletto of The Rhine'. Art Sales Index (Worldwide auction results). The three pictures are direct from a deceased estate.



ALFRED H GREEN

‘The Hornets Nest’

Oil on canvas 30x24”

£2750

Pristine untouched condition.



NIGEL HEMMING

'Golden Retrievers'

Oil on canvas 20x26"

£1450

British b.1957.

A peoples' favourite canine illustrator/painter, reproduced widely on print editions.



HENRY W. HENLEY

'On the River Conway'

Oil on canvas 16x24"

£975

British, exhibiting 1871-1895.



GEORGE GOODWIN KILBURNE R.I.

‘The Music Lesson’

Watercolour 10x14"

£1275

British 1839–1924.

Painter of historical genre scenes in both oils and watercolour. The Royal Academy exhibited 37 pictures – and the Royal Institute of Watercolour Painters, over 100 – and was elected member (R.I) in 1868. Many pictures in public art museum collections. In first class condition, direct from private owners.



ROY HODRIEN

'Mustard Pot, Gin Bottle, Pears & Hazelnuts on a
Cream Cloth'

Oil on panel 20x16

£2600

British b.1957.

Emulating the 17th C Dutch masters



HENRY JOHN SYLVESTER STANNARD R.B.A.

'Young Gleaners'

W/col 20x14"

£1450 (Another £575)

British 1870-1951.



CHARLES THOMAS BURT R.B.S.A.

'Shrimpers Returning during a Squall'

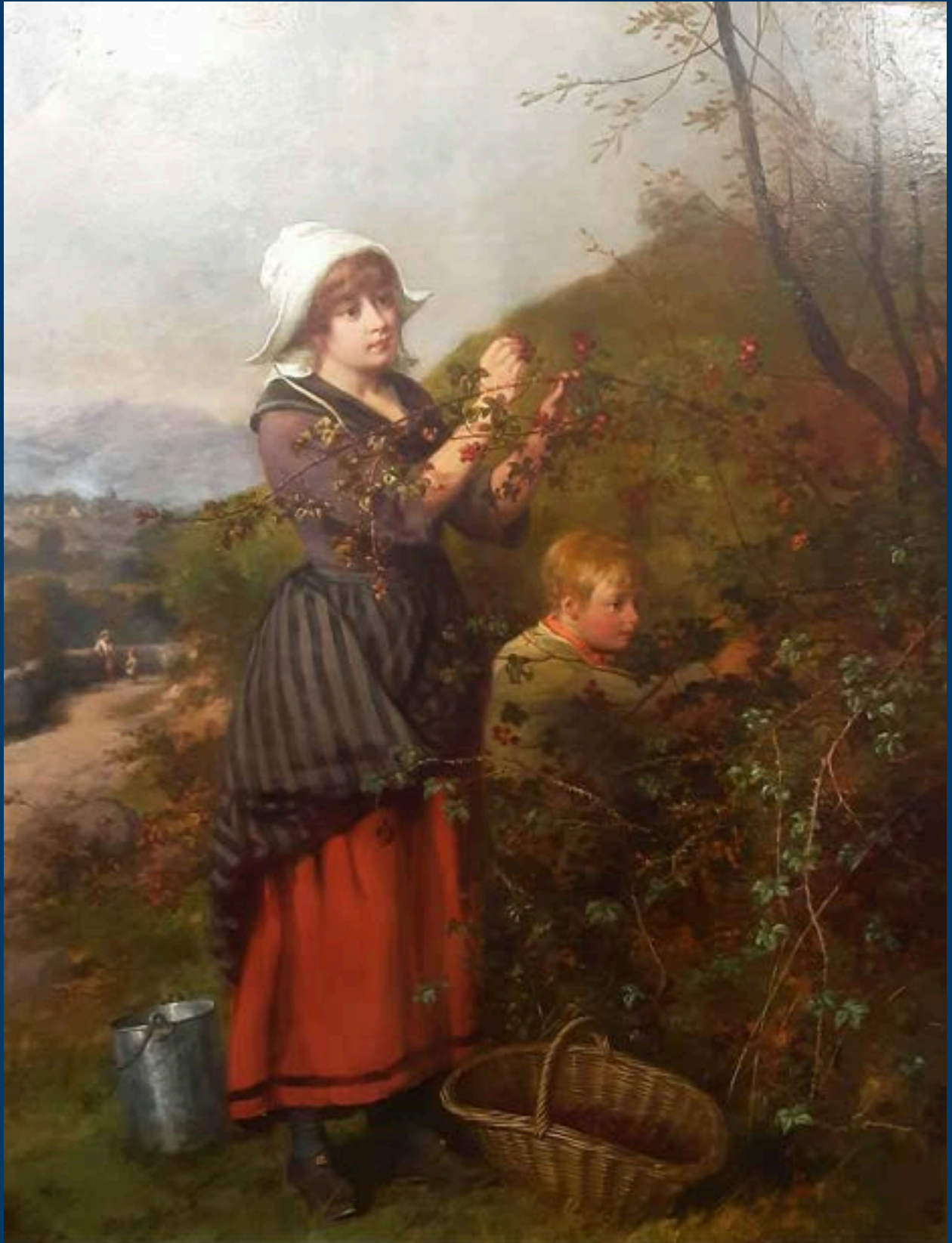
Oil on canvas 20x30"

£2750

British 1823-1902.

Edgbaston born landscape and coastal painter; a friend and pupil of David Cox. The Royal Academy showed many of his works and many at the R.B.S.A. where he was elected full member in 1856.

This typically atmospheric foreshore scene is in untouched, unskinned condition in original swept frame. The canvas needs minor work but we will sort if buyer prefers.



WILLIAM BROMLEY

'Blackberry Picking'

Oil on canvas 36x28" £4950

London genre painter exhibiting at the R.A. and other societies from 1835-1888. Direct from deceased estate.



HARRY WALLACE N.S.A.
'Deer in Sherwood Forest'
Oil on canvas 16x26"
£875
British, exhib 1881-1934.



CHARLES JAMES ADAMS

'Changing Pastures'

Watercolour 15x21"

£1200

British, 1859–1931.

Popular mainly watercolour artist, training at Leicester School of Art. Specialized in farming life genre, always with animals. The Royal Academy exhibited 37 works – and the Royal Institute of Watercolour Artists 30. This lovely example remains in fine colour-rich condition, direct from a private collection



JOSEPH THORS

'Fishing the Farm Pond'

Oil on Panel 14x18"

£1450

British, exhibiting 1863-1900.

Prolific Midlands landscape artist often described as Norwich School; and clearly influenced by that great East Anglian, John Constable. This rustic view is typical of his best works often painted on wood panels. See: Dictionary of Victorian Painters (Wood) illustrated.



OLIVER CLARE

'Birds Nest and Blossom'

Oil 9x12"

£695 (others from £475)

British, 1853-1927.



KENNETH GRANT

'The Cutty Sark in Full Sail'

Oil on canvas 24x36"

£1650

British b.1934.

Norfolk marine and aviation artist, exhibiting/selling in London,
USA & Australia.



GEORGE SHERIDEN KNOWLES RI. ROI. RBA.

'Close Companions'

Watercolour 21x14" £3375

British, 1863-1931.



JOHN HENRY HENSHALL R.W.S.

'The Lesson'

Watercolour 9x11"

£1200



WALTER HUNT

'Sunny Jim in Straw Hat'

Oil on canvas 14x10"

£2000

British, 1861-1841.

An intimate study, clearly a private family piece, by the most important and best of the Hunt dynasty of animal/genre painters. Signed, inscribed and dated 1916 outside the oval - and still in original domestic framing, untouched.



RICHARD HILDER

'Extensive Landscape with Drover'

Oil on panel 12x16"

£1750

British, exhibiting 1836-1851.

London landscape painter exhibiting many works at the Royal Academy, typically scenes in Kent and Sussex. This fine typical work is in fine condition direct from a local collection. Unsigned, as per normal for this artist and others of this period - but signed all over.



JOHN SEYMOUR LUCAS R.A.

'Squire, Wife and Hound in Haddon Hall'

Oil on canvas 18x24"

£2450

British, 1849-1923.

Important London historical genre painter and full member of the Royal Academy. Many works in public museum collections (see art.org.uk). Direct from a local widow and in pristine original condition in glazed and sealed original fine swept frame.



ARTHUR WILDE PARSONS R.W.A.

'Waiting at the Quayside'

W/col 20x30"

£1475

British 1854-1931



NICHOLAS CONDY

'Important News'

Oil on panel 12x9"

£1275

British 1793-1857.



WILLIAM JOHN WAINWRIGHT R.W.S.

'A Health to His Majesty'

W/col 30x22"

£2450

British 1855-1931.

Founder member of the Newlyn School.



EDWARD RICHARDSON

'Alpine Village"

Watercolour 10x14"

£1100

British, 1810-1874.

Landscape painter in watercolour exhibiting 187 works at the New Watercolour Society, where he became an Associate in 1859. The older brother of T.M.Richardson and very similar in style, subjects and quality. Remaining in choice condition direct from private owner.



CHARLES THOMAS BALE

'Fruit on a Mossy Bank'

Oil 14x18"

£975

British, exhibiting 1868-1875.



GEORGE STAINTON
'Hay Barges Offshore'
Oil 18x24"
£1600
British, exhibiting 1860-1890.



STEPHEN PARK

'At the Watering Hole'

Oil on canvas 20x40"

£1100

British b.1953.



CHARLES W OSWALD

'Highland Cattle'

Oil on canvas 15x19"

£575

British, exhibiting 1882-1900.



CLIFFORD MONTAGUE

'On Lake Maggiore'

Oil on panel 12x18"

£1675

British, exhibiting 1885-1893.



JAMES BARNES

'Moorland Peat Gathering'

Oil on canvas 18x24"

£1475

Image sizes without frames/mounts

ADDITIONAL IMAGES - IN FRAME, SIGNATURE,
HIGHLIGHTS, REVERSE ETC. - SENT ON
REQUEST.

Phone: 0121 355 5433

Email: infodriffold@gmail.com

The Driffold Gallery Guarantee.

- The item purchased is an authentic work by the stated artist.
- The artist is rated and valued across the UK at least.
- The item is a good typical work by the artist.
- Any signature, date or inscription is that of the artist.
- The item is in fine unspoiled condition.

A full refund will be given if the buyer is not satisfied that the item meets all these important factors.

Please telephone or email (as above) if you wish to discuss a possible purchase or make a firm offer.

Artists who's works we have recently and previously sold include –

TS Cooper, Yeend King, Edgar Hunt, JF Herring Junr, BW Leader, Heywood Hardy, FD Hardy, Walter Langley, HH Parker, GB O'Neill, George Shalders, FW Watts, JS Noble, Wm Mellor, WH Margetson, Albert Goodwin, A DeBreanski, H Dawson, WL Wyllie, George Wright, David

James, Charles Jones, WS Coleman, W
Breakspeare, JC Adams, EW Waite, FW Watts,
HB Willis, Oliver & Vincent Clare, Sheridan
Knowles, W Lee-Hankey, B Priestman, George
Henry, Fred Hall, SJ Lamorna Birch, Dorothea
Sharp, Harold Knight. Stanhope Forbes,
Atkinson Hornel, Fleetwood Walker, E Steele
Harper, John Bratby etc. etc.

Other original works by these artists, those
currently with us and other favourites are
always of interest.



GIFT VOUCHERS AVAILABLE FROM £250

THIS PDF BROCHURE CAN BE FORWARDED ON BY EMAIL TO ANY OTHER INTERESTED PERSON(S)

